

### SJSS-Series Sanitary Swivels



**Applications**

- Used for smooth movement of flow plate connections
- Prevents kinking, twisting and stretching of hose lines

**Sizes**

- 1" - 4"

**Features**

- Dixon wingnut for better grip
- Available in a variety of styles - see below

**Materials**

- Body: 316L stainless steel
- Elastomers: silicone or EPDM

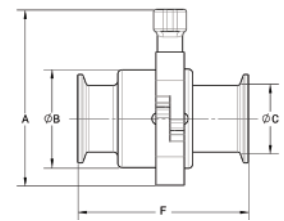
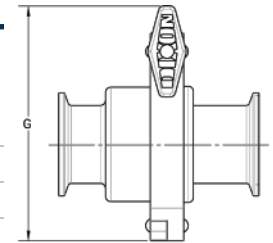
**Approval**

- 3A certified COP



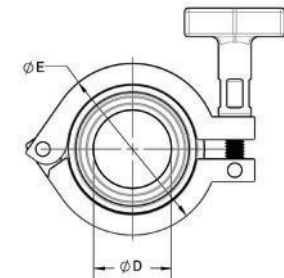
**Straight Clamp - Style 20**

Size	Dimensions			Pressure Rating PSI @ 70°F (21°C)	Pressure Rating PSI @ 250°F (121°C)	Silicone Seals Part #	EPDM Seals Part #
	A (in)	B (in)	C (in)				
1"	2.42	3.87	1.00	500	300	SJSS100SCC120	SJSS100ECC120
1-1/2"	2.99	3.87	1.50	500	300	SJSS150SCC120	SJSS150ECC120
2"	3.48	3.84	2.00	450	250	SJSS200SCC120	SJSS200ECC120
2-1/2"	3.98	3.84	2.50	400	200	SJSS250SCC120	SJSS250ECC120
3"	5.08	3.84	3.00	350	175	SJSS300SCC120	SJSS300ECC120
4"	7.03	4.97	4.00	300	150	SJSS400SCC120	SJSS400ECC120

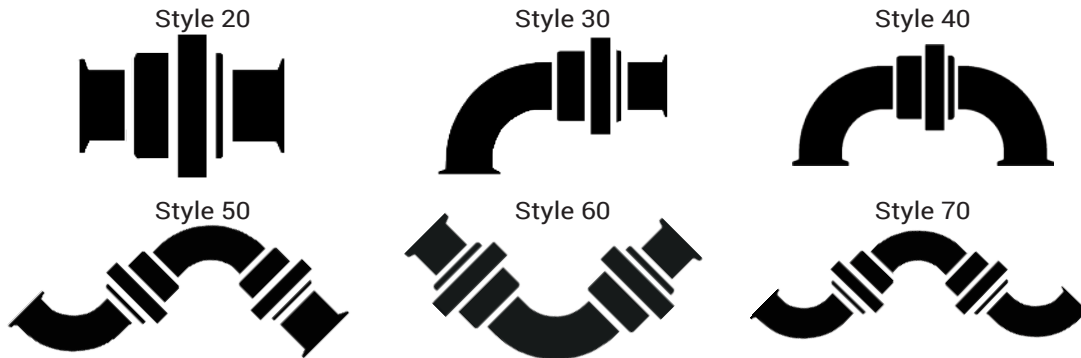


**Straight Weld Connection - Style 20**

Size	Dimensions			Pressure Rating PSI @ 70°F (21°C)	Pressure Rating PSI @ 250°F (121°C)	Silicone Seals Part #	EPDM Seals Part #
	A (in)	B (in)	C (in)				
1"	2.42	2.24	1.00	500	300	SJSS100SBB120	SJSS100EBB120
1-1/2"	2.99	2.24	1.50	500	300	SJSS150SBB120	SJSS150EBB120
2"	3.48	2.22	2.00	450	250	SJSS200SBB120	SJSS200EBB120
2-1/2"	3.98	2.22	2.50	400	200	SJSS250SBB120	SJSS250EBB120
3"	5.08	2.21	3.00	350	175	SJSS300SBB120	SJSS300EBB120
4"	7.03	3.22	4.00	300	150	SJSS400SBB120	SJSS400EBB120



**SJSS-Series Repair Kits**



Size	Contains	Silicone Part #	EPDM Part #
1"		SJSS-REPAR-S100	SJSS-REPAR-E100
1-1/2"	(1x) inner body gasket	SJSS-REPAR-S150	SJSS-REPAR-E150
2"	(1x) outer body gasket	SJSS-REPAR-S200	SJSS-REPAR-E200
2-1/2"	(1x) upper body seat	SJSS-REPAR-S250	SJSS-REPAR-E250
3"	(1x) lower body washer	SJSS-REPAR-S300	SJSS-REPAR-E300
4"	(1x) inner body brushing - only on 4"	SJSS-REPAR-S400	SJSS-REPAR-E400