

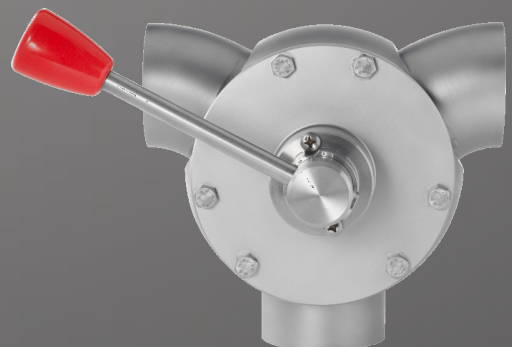


**LIAG**®  
USA



**LAUFER**  
Valve Technology Inc.

**Sanitary Multi-Port Free Flow Arc Valves  
for hygienic processes**



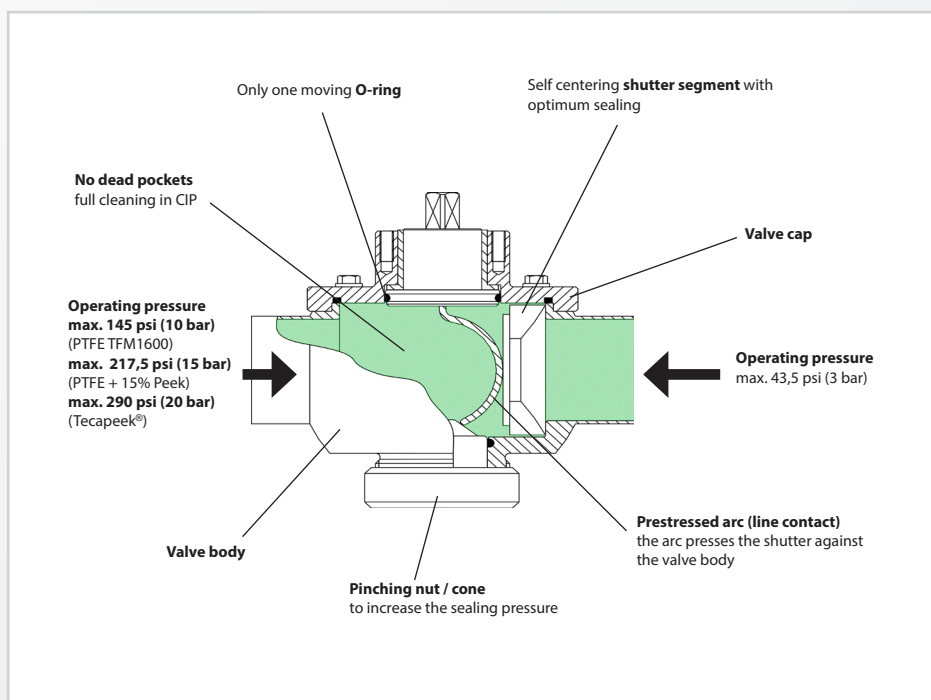
# LIAG® Multi-Port Free Flow Arc Valves

for highly viscous, fast hardening media and hygienic pigging processes

## The hygienic alternative to ball valves

LIAG® free flow arc valves have been designed according to hygienic design guidelines to meet the high demands of process engineering applications. LIAG® valves are particularly suited for viscous/pasty products and fluids containing solid particles on account of a totally clear passage, as well as easy and thorough cleaning in place.

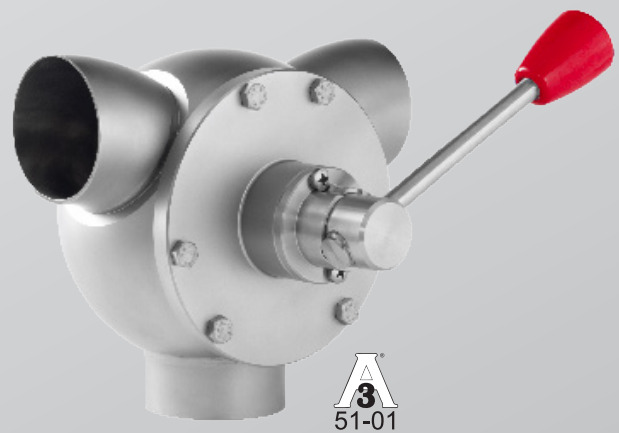
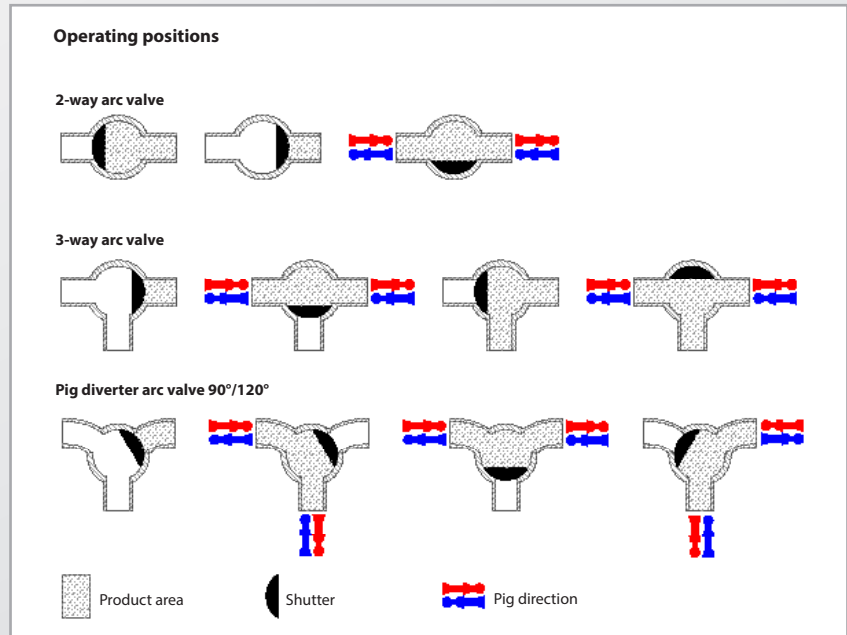
This valve series thus provides optimum conditions for a wide variety of pigging system applications. By virtue of their simplicity of design and minimum number of components and wearing parts, LIAG® valves are characterized by maximum hygiene, low maintenance and safe operation.



# Made with Know How

## Features

- No dead pockets
- CIP/SIP capability (hygienic design)
- Totally clear passage – no pressure loss
- No product remainders or sticking of solid particles
- Designed to be passed with DMV lip pigs
- Minimum number of components and wearing parts
- Can be completely dismantled even when welded in place
- 3-A 51-01 and FDA compliance
- CRN



# Hygienic – Modular – Efficient

	2- / 3-way arc valve	Pig diverter arc valve 90° / 120°
<b>Nominal sizes</b>		
Inch:	1" / 1.5" / 2" / 2.5" / 3" / 4" / 6"	1.5" / 2" / 2.5" / 3" / 4"
DIN:	25 / 40 / 50 / 65 / 80 / 100 / 150	40 / 50 / 65 / 80 / 100
<b>Materials</b>		
Inox parts in contact with product:	AISI 316L (1.4404 / 1.4435)	AISI 316L (1.4404 / 1.4435)
Other inox parts:	AISI 304 (1.4301)	AISI 304 (1.4301)
O-ring seals:	EPDM, FKM (Viton®), FEP, other grades upon request	EPDM, FKM (Viton®), FEP, other grades upon request
Shutter:	PTFE	PTFE
<b>Surfaces</b>		
In contact with product:	Ra ≤ 32µin (Ra ≤ 0.8µm)	Ra ≤ 32µin (Ra ≤ 0.8µm)
<b>Temperature</b>		
Operating temperature:	230°F (110°C)	230°F (110°C)
Short-term:	284°F (140°C) - optionally up to 392°F (200°C)	284°F (140°C) - optionally up to 392°F (200°C)
<b>Operating pressure</b>		
Pressure behind arc:	145 psi (10 bar) – optionally up to 290.1 psi (20 bar)	145 psi (10 bar) – optionally up to 290.1 psi (20 bar)
Pressure against arc:	43.5 psi (3 bar)	43.5 psi (3 bar)
<b>Versions</b>	2-way / 3-way	3-way (3 x 120°)
<b>Operation</b>		
Manual:	with handle (4 locking positions)	with handle (3 locking positions)
Pneumatic:	<ul style="list-style-type: none"> <li>Vertical pneumatic actuator (AISI 304)</li> <li>Horizontal pneumatic actuator (aluminium housing)</li> </ul>	<ul style="list-style-type: none"> <li>Horizontal pneumatic actuator (aluminium housing)</li> </ul>
<b>Valve connection</b>		
Clamp connection:	Tri-Clamp	Tri-Clamp
Welded ends:	Inch, DIN	Inch, DIN
Male ends:	DIN 11851	DIN 11851
<b>Further options / Certificates</b>	<ul style="list-style-type: none"> <li>4-way version</li> <li>Shutter material; alternatively: PTFE+15% Peek, Tecapeek®</li> <li>Heated version</li> <li>Leakage control of moving O-ring seal / steam barrier with ball-bearing supported selector shaft</li> <li>Combination of different types of connection</li> <li>Delivery and adaptation to actuators of different manufacture per Namur NE14 and DIN EN ISO5211</li> <li>3-A 51-01 and FDA compliance</li> <li>CRN</li> </ul>	

**LAUFER Valve Technology Inc., 2300 Walnut Ave, Suite Q-R, Signal Hill, CA 90755**  
T: +1.562.232.4777 - sales@laufer-valve.com - www.laufer-valve.com

